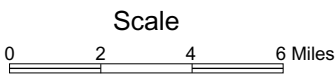
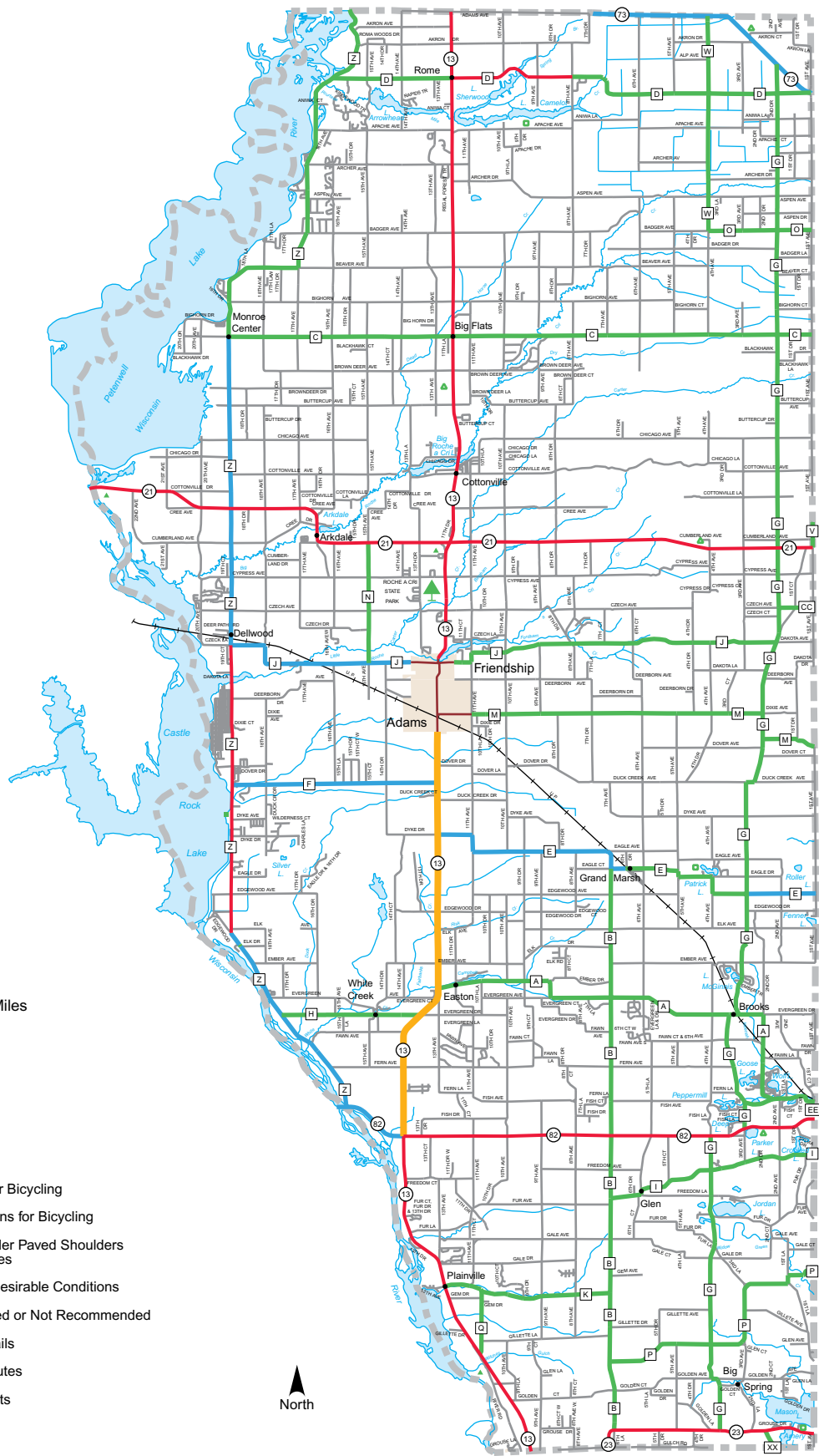


Bicycling Conditions

Adams County



- Town Roads
- Best Conditions for Bicycling
- Moderate Conditions for Bicycling
- Highways with Wider Paved Shoulders with Higher Volumes
- 2 Lane
- 4 Lane
- High Volume; Undesirable Conditions
- Bicyclists Prohibited or Not Recommended
- Bicycle Touring Trails
- Urban Escape Routes
- Major Urban Streets

